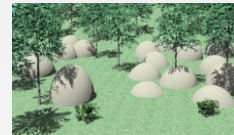




# Contents



## **1. Contours**

An intuitive introduction to contours.

## **2. Orienting the Map**

Using the compass to align the map with the ground.

## **3. Man-Made Linear Features**

Recognising roads, paths, fences, and similar features.

## **4. Introduction to Vegetation**

Interpreting vegetation of different thicknesses.

## **5. Naming Contour Features**

Putting names to landforms depicted with contours.

## **6. Water Features**

Recognising streams, marshes and similar features.

## **7. Rock On!**

Identifying rock features such as boulders and cliffs.

## **8. Earthworks**

Interpreting excavated features such as ditches.

## **9. More Man-Made Features**

Recognising features such as buildings and structures.

## **10. Variations on Vegetation**

Understanding variants of vegetation symbols.

## **11. Contours #2**

Interpreting contours at an advanced level.

## **12. On Course**

Recognising course and direction markings.