



IMPORTANT UPDATE

Due to expected hot weather on Sunday, all start times for Event 2 - Eureka Challenge, have been brought forward by one hour.

The first starts will now be at 8:29am rather than 9:29am. This should make conditions more bearable for orienteering.

An updated start list is included in this document.

For the Victorian State League, starts on courses 5, 6, 7, 8 and 9 will be from 8:30 to 11; and for courses 1, 2, 3, and 4 from 9 to 11.

Hopefully we will be able to clear the forest by early afternoon, which was the preference of the Park Ranger.



ROUNDS #1 & 2

8TH - 9TH MARCH 2008

VICTORIA

Event Format

Event 1	Saturday 08-Mar-08	Relay	Spring Gully, Fryerstown, Victoria
Event 2	Sunday 09-Mar-08	Long Distance with loops	Mt Beckworth, Clunes, Victoria

The SILVA National Orienteering League is Australia's premier orienteering competition. The League is primarily a team's competition: each state fields teams of at least 3 women and 3 men in four series of races per year (a total of 14-18 races). In addition, there is a points competition for individual glory.

There are four divisions of the SILVA National Orienteering League and four of the SILVA National Orienteering Series:

SILVA National Orienteering League:

Senior Teams: Based on the results in the Senior Men's and Senior Women's divisions of the National Orienteering Series and is the premier competition.

Junior Teams: Based on the results in the Junior Men's and Junior Women's divisions of the National Orienteering Series.

SILVA National Orienteering Series:

Senior Men: Open

Senior Women: Open

Junior Men: Under age 21

Junior Women: Under age 21

The seven state-based teams in the competition are: Canberra Cockatoos, NSW Stingers, Queensland Cyclones, Southern Arrows, Tassie Foresters, Victorian Nuggets and Western Nomads.

Event 2 (Eureka Challenge) is a SILVA selected event with prizes

(Place-getters are asked to wear the SILVA hat/headband provided on the podium)

	Senior Men & Women	Junior Men & Women
FIRST	\$100.00	Prize
SECOND	\$50.00	Prize
THIRD	\$25.00	Prize

Plus a selection of random draw prizes for public race entrants (must be present at prize-giving to collect your prize otherwise another name will be randomly drawn).



Event 1 – NOL Relay (and Victorian Club Relay Championships)

Date: Saturday, 8th March 2008

Format: Relay (3 runners in each team)

Organisers: CHOC/DROC/Tuckonie Orienteering Clubs
Sean Sunley
Home 03 9742 2292 Work 03 9256 3311 Mobile 0433 073959
SeanSunley@bigpond.com



Course Setter: Ian Phillips

Controller: Jim Russell jymbo@dodo.com.au Mobile 0411125178

Venue: Spring Gully, 10kms southeast of Castlemaine. Venue of the 1985 World Orienteering Championships relay and 2006 Australian 3-Day Championships Long Distance race (Day 2).



Directions: From Melbourne: follow Calder fwy to Elphinstone, take Castlemaine exit (B180). Head towards Chewton. In Chewton turn left onto Fryers Rd and follow ""O"" signs. (Melways reference Map 909 D7.)

Terrain: Spur Gully terrain with complex erosion gullies and gold mining. The gullies provide detailed vegetation variation. Previously used for the 2006 Australian 3 Day Championships and the 2007 Victorian Long Distance Championships.

Scale: 1:10,000 5m contours

Registration: State NOL Managers should collect team chest numbers from registration between 12:30pm and 1pm and pay any outstanding entry fees. All team composition and SI numbers should already have been finalised with the event secretary by 29th February.



Briefing: NOL relay briefing for first leg runners will be conducted at 1:45pm) (Victorian Club Relay for first leg runners will be conducted at 11:45am)
Please remember to clear and check your SI sticks before you start.

Start Times: NOL relay start from 2pm
(Victorian Club Relay start from 12 noon)
NOL mass start for any runners who have not yet started will be conducted at 4pm
NOL Maps will be available for collection after this time

Fire Danger: If a fire ban is declared for the North West district, team managers should contact the event controller for further instructions.

Facilities: Toilets/Water/Eureka Cake Stall/Kev's O Gear. Other facilities at Chewton.

Course Details: M21E 7.9 km, 20 controls

W21E 6.2 km, 15 controls

M20E 6.2 km, 15 controls

W20E, 4.1 km, 11 controls

Start list: Final relay teams are on the following pages.

NOL Relay # Name	State	SI#Relay class	Official
1.1 Troy de Haas	VIC	204010 M21E	
1.2 Evan Barr	VIC	204087 M21E	
1.3 Bruce Arthur	VIC	204290 M21E	
2.1 Christopher Naunton	VIC	204202 M21E	
2.2 Blair Trewin	VIC	41228 M21E	
2.3 Warren Key	VIC	44205 M21E	
3.1 David Brownridge	VIC	204304 M21E	
3.2 Adam Scammell	VIC	302890 M21E	
3.3 Max Neve	VIC	304348 M21E	
4.1 Matt Parton	NSW	402466 M21E	
4.2 Rob Preston	NSW	44165 M21E	
4.3 Julian Dent	NSW	850519 M21E	
5.1 Josh Blatchford	NSW	364431 M21E	
5.2 Glenn Meyer	NSW	402309 M21E	
5.3 Dave Meyer	NSW	402310 M21E	
6.1 Kerrin Rattray	SA	306102 M21E	
6.2 Reuben Smith	SA	760406 M21E	
6.3 Simon Uppill	SA	407999 M21E	
7.1 Ryan Smyth	TAS	406186 M21E	
7.2 Louis Elson	TAS	406192 M21E	
7.3 Paul Liggins	TAS	204090 M21E	
8.1 Oliver Mitchell	QLD	346940 M21E	
8.2 Ian Anderson	QLD	354643 M21E	
8.3 Kieran Sullivan	QLD	346934 M21E	
9.1 Simon Mee	QLD	354660 M21E	
9.2 Mathieu McGuire	QLD	258862 M21E	
9.3 Caine Batten	QLD	406660 M21E	
10.1 Andy Hogg	ACT	264032 M21E	
10.2 Rob Walter	ACT	351840 M21E	
10.3 Dave Shepherd	ACT	1006144 M21E	
11.1 Steve Todkill	NSW	402327 M21E	No
11.2 SWE?? Tbc	SWE	*204109 M21E	No
11.3 spare		M21E	No
12.1 Jasmine Neve	VIC	204385 W21E	
12.2 Natasha Key	VIC	44203 W21E	
12.3 Kathryn Ewels	VIC	204020 W21E	
13.1 Ilka Barr	VIC	204088 W21E	
13.2 Zoe Radford	VIC	204320 W21E	
13.3 Clare Brownridge	VIC	204305 W21E	
14.1 Vanessa Round	SA	204166 W21E	

14.2 Jenny Casanova	SA	403504 W21E	
14.3 Susanne Casanova	SA	403503 W21E	
15.1 Rachel Effeney	QLD	256626 W21E	
15.2 Laurina Neumann	QLD	910888 W21E	
15.3 Anna Sheldon	QLD	41226 W21E	
16.1 Bridget Anderson	QLD	354644 W21E	
16.2 Julia Davies	QLD	406209 W21E	
16.3 Ainsley Cavanagh	QLD	258821 W21E	
17.1 Mace Neve	ACT	204340 W21E	
17.2 Allison Jones	ACT	41249 W21E	
17.3 Jo Allison	ACT	41230 W21E	
18.1 Belinda Lawford	ACT	409754 W21E	
18.2 Shannon Jones	ACT	44279 W21E	
18.3 Heather McDonald	ACT	43170 W21E	
19.1 Tracy Bluett	NSW	44159 W21E	
19.2 Briohny Davey	NSW	402196 W21E	
19.3 Felicity Brown	NSW	402185 W21E	
20.1 Emily Prudhoe	NSW	335391 W21E	No
20.2 spare		W21E	No
20.3 spare		W21E	No
21.1 Bryan Keely	VIC	888407 M17-20E	
21.2 Leon Keely	VIC	302898 M17-20E	
21.3 Morten Neve	VIC	204358 M17-20E	
22.1 Tristan Lee	SA	407971 M17-20E	
22.2 Rory McComb	SA	352050 M17-20E	
22.3 Michael Roberts	SA	405716 M17-20E	
23.1 Lachlan Dow	ACT	44282 M17-20E	
23.2 Geoff Stacey	ACT	337191 M17-20E	
23.3 Robert McDonald	ACT	43176 M17-20E	
24.1 James Sheldon	QLD	354670 M17-20E	No
24.2 Oliver Crosato	QLD	258834 M17-20E	No
24.3 spare		M17-20E	No
25.1 Aislinn Prendergast	VIC	204181 W17-20E	
25.2 Jasmine Sunley	VIC	302897 W17-20E	
25.3 Rebekah Sunley	VIC	302892 W17-20E	
26.1 Krystal Neumann	QLD	251286 W17-20E	No
26.2 spare		W17-20E	No
26.3 spare		W17-20E	No
27.1 Lauren Gillis	SA	229968 W17-20E	No
27.2 John Nieuwenhoven	SA	407928 W17-20E	No
27.3 spare		W17-20E	No

Event 2 – Eureka Challenge (and Victorian Badge/State Series Event)



Date: Sunday, 9th March 2008

Format: Long Distance with loops and several spectator controls

Organiser: Blake Gordon (eurekao@netconnect.com.au)
(03) 5331-7937

Course Setter: Terry Haebich (thaebich@bigpond.net.au)

Controller: Chris Norwood (<mailto:chris.norwood@dsto.defence.gov.au>)

Venue: Mt Beckworth Scenic Reserve, 5km west of Clunes

Directions: From Melbourne - take Western Highway(M8) past three Ballarat exits following the Ballarat Bypass; exit Bypass at Clunes/Maryborough exit (C287/Learmonth Road); turn right over the Bypass and travel through Miners Rest towards Clunes for 7 km; veer left into Coghills Ck Rd and travel 13 kms; turn right on Fenton Road (o-sign); after 4 kms turn left into Mountain Creek Rd (o-sign) and follow o-signs 4 kms to parking area.

From Bendigo - travel through Maldon, Newstead and Campbelltown to Clunes; in centre of Clunes turn right on Maryborough Road and travel 2 kms; turn left on Cemetery Road; cross railway line and turn right on Pickfords Rd; follow this road by veering left after 250 m and by turning left after a further 800 m Travel south for 3kms and turn right on Mountain Road (o-sign) and follow o-signs 4 kms to parking area

Terrain: Scale 1: 10,000, 5 metre contours

The terrain varies from almost flat to very steep, and the area contains complex rock detail in all but the flat sections. Competitors will experience the full range of slope variation on the courses. The open vegetation generally offers fast to very fast running, although there are scattered patches of light green, and the occasional patch of dark green. The vegetation in many of the light green areas has died off, however, these are still distinguishable from the surrounding open forest. Individual distinct trees have not been mapped. The soil on the steeper slopes is often dry and loose, so care needs to be exercised. There are a lot of areas marked as rocky ground where only features larger than the average height (generally around one metre) have been mapped.

A small area on the side of Mt Beckworth has been marked with the purple cross-hatching dangerous area symbol. This highlights a dangerous cliff complex and should be avoided. This should only affect Course 1 runners.

Start Procedures and Course Notes – Important:

1. Each of the 4 NOL courses consists of two loops, one to the north of the assembly/start area and one to the south. There are two variations for each course A and B. The "A" variation does the northern loop first and then the southern loop whereas the "B" variation does the southern loop first and then the northern loop. The only difference between the "A" and "B" variations is which loop is run first. The first and last controls are also the mid-course loop crossover and spectator controls.

2. Starts are 2 minutes apart and a pair of competitors on each course will start together; one on A and one on B. Courses 1 and 3 will start on the odd minutes and Courses 2 and 4 will start on the even minutes. First starts are at 9:29 EDT.

3. Competitors have been arranged into matched pairs based upon the latest OFA rankings list. Competitors were listed in rank order and then paired-off starting with the two highest ranked runners, then the next two highest ranked etc. Start times for the pairs were then allocated by random draw.

4. A three minute prestart is being used - all competitors will be called up three minutes prior to their start times e.g. the 09:30 starters will be called up at 09:27 EDT.

Start procedure is:

Start – 3, call up and SI stick check

Start -2, collect clue sheet

Start -1, map box

Start

It is the competitor's responsibility to arrive on time - late arrivals must notify the start officials. Start times will NOT be changed on the day.

5. **Control descriptions are NOT on the map.** Each competitor is to ensure that they take the correct control description sheet ("A" or "B"), which will be issued at the pre-start. The number of controls on each course are: C1 = 30, C2 = 24, C3 = 21 and C4 = 18.

6. Each competitor is to ensure that they take the correct map at the start.

7. The courses are physically demanding - ensure that you rehydrate regularly

Please remember to clear and check your SI sticks before you start.

Distances from parking to finish and start(s):

Finish is 50 metres; start(s) is 200 metres

Registration times, venue and procedure:

The event is pre-entry. Starts will be determined by a random draw. Chest numbers for this event should be collected at the relay event.

Facilities available:

Toilets and water in the assembly area; cake stall for after the race!

Course Details:	C1 M21E	11.9km	525m	30 controls
	C2 M17-20E	8.8km	375m	24 controls
	C3 W21E	7.8km	350m	21 controls
	C4 W17-20E	5.8km	300m	18 controls

Public courses

Orienteering Victoria State Series courses will be offered at event 2. Pre-marked maps are available for public entries to event 2 by pre-entering at the Eureka Orienteers website at <http://www.eurekaorienteers.asn.au/index.html>.

Fire Danger: If a fire ban is declared for the Central district, team managers should contact the event controller for further instructions.

Chest Numbers must be worn by National League competitors and can be collected at the relay registration.

Enquiries to Event Secretary

Bruce Arthur
2/16 Cain Ave
Northcote VIC 3070

brucearthur1@bigpond.com
h (03) 9481 8191
m 0458 391 261

Official results will be posted on www.orienteering.asn.au as soon as possible after the event.

SmokeFree



Start Times: NOL starts from **8:29am EDT** (see page 1)

Start List:

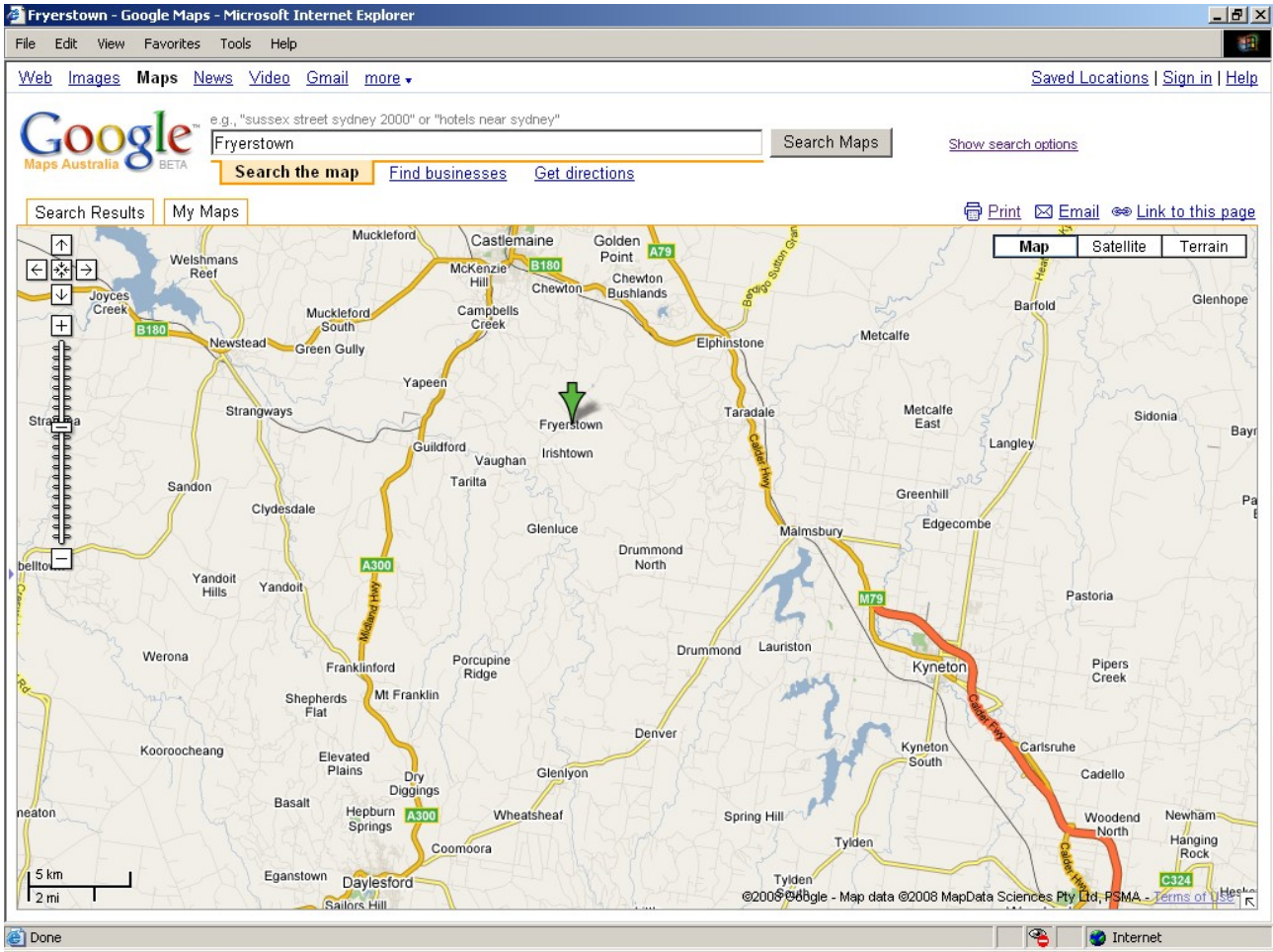
NOL #	Name	State	SI#	Long class	Course	New Start Time*
	Lachlan			M21E	1A	8:29
24	Evan	VIC	204087	M21E	1B	8:31
	Ian			M21E	1A	8:31
31	David	VIC	204304	M21E	1B	8:33
32	Kieran	QLD	346934	M21E	1A	8:33
7	Reuben	SA	760406	M21E	1B	8:35
8	Kerrin	SA	306102	M21E	1A	8:35
28	Glenn	NSW	402309	M21E	1A	8:37
29	John	SA	407928	M21E	1B	8:37
12	Blair	VIC	41228	M21E	1B	8:39
17	Matt	NSW	402466	M21E	1A	8:39
53	Adam	VIC	302890	M21E	1B	8:41
57	Steve	NSW	402327	M21E	1A	8:41
36	? tbc	SWE	tbc	M21E	1A	8:43
43	Ian	QLD	354643	M21E	1B	8:43
16	Dave	NSW	402310	M21E	1A	8:45
26	Louis	TAS	406192	M21E	1B	8:45
56	Caine	QLD	406660	M21E	1A	8:47
47	Oliver	QLD	346940	M21E	1B	8:47
9	Bruce	VIC	204290	M21E	1B	8:49
6	Rob	NSW	44165	M21E	1A	8:49
1	Julian	NSW	850519	M21E	1B	8:51
2	Dave	ACT	1006144	M21E	1A	8:51
14	Ryan	TAS	406186	M21E	1A	8:53
18	Christopher	VIC	204202	M21E	1B	8:53
51	Andy	ACT	264032	M21E	1A	8:55
55	Mathieu	QLD	258862	M21E	1B	8:55
21	Paul	TAS	204090	M21E	1B	8:57
22	Warren	VIC	44205	M21E	1A	8:57
3	Rob	ACT	351840	M21E	1B	8:59
5	Simon	SA	407999	M21E	1A	8:59
52	Johan	SWE	710206	M21E	1B	9:01

	vacant 1			M17-20E	2A	8:40
	vacant 2			M17-20E	2B	8:40
59	Michael Roberts	SA	405716	M17-20E	2A	8:42
63	Oliver Crosato	QLD	258834	M17-20E	2B	8:42
60	Lachlan Dow	ACT	44282	M17-20E	2A	8:44
64	Robert McDonald	ACT	43176	M17-20E	2B	8:44
49	Simon Mee	QLD	354660	M17-20E	2B	8:46
50	Geoff Stacey	ACT	337191	M17-20E	2A	8:46
38	Bryan Keely	VIC	888407	M17-20E	2A	8:48
34	Morten Neve	VIC	204358	M17-20E	2B	8:48
58	Rory McComb	SA	352050	M17-20E	2A	8:50
62	James Sheldon	QLD	354670	M17-20E	2B	8:50
37	Tristan Lee	SA	407971	M17-20E	2A	8:52
44	Leon Keely	VIC	302898	M17-20E	2B	8:52
54	Josh Blatchford	NSW	364431	M17-20E	2B	8:54
61	Max Neve	VIC	304348	M17-20E	2A	8:54

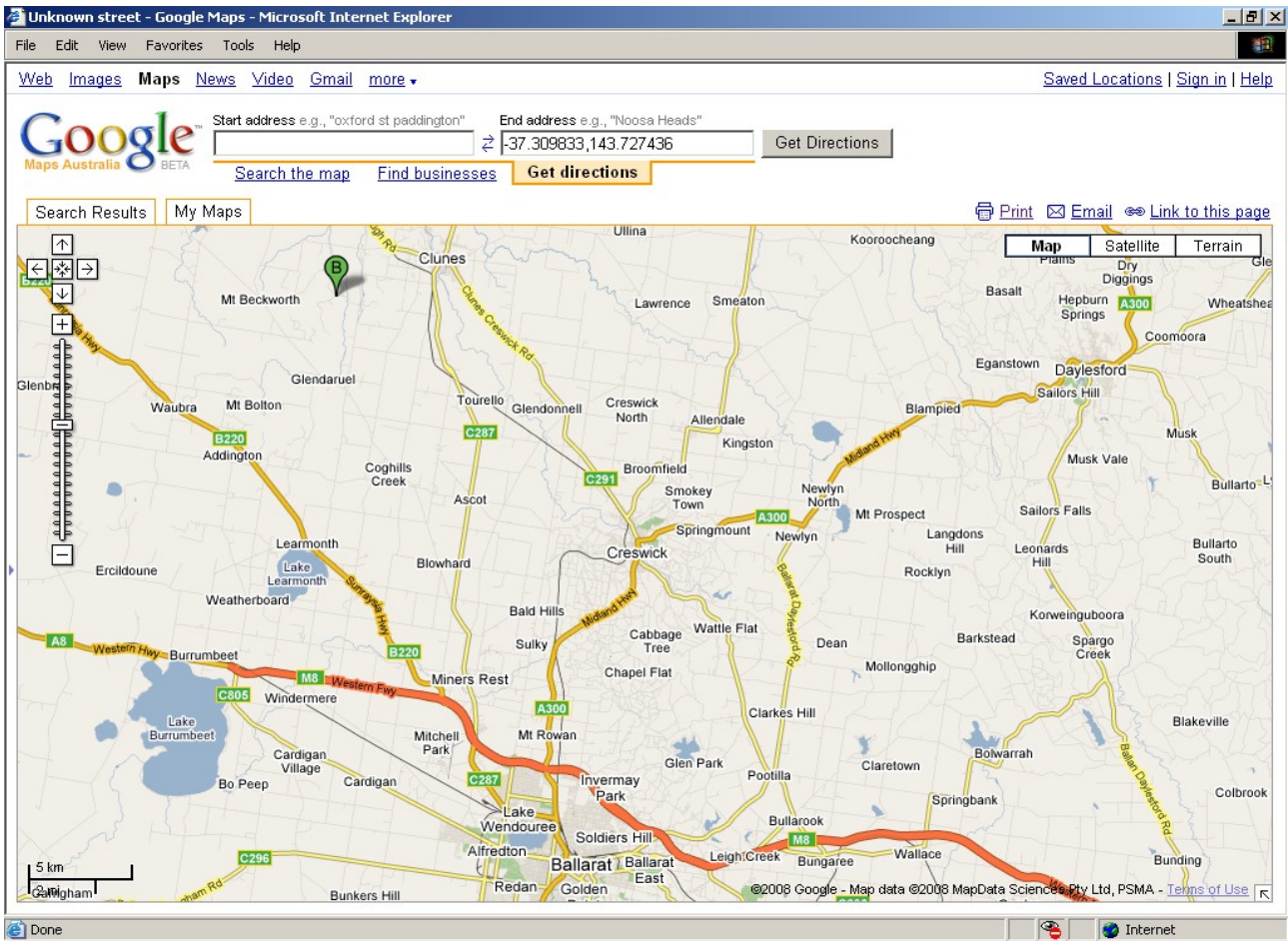
	vacant 2			W21E	3A	8:35
159	Kirsten Fairfax	VIC	204047	W21E	3B	8:35
103	Jo Allison	ACT	41230	W21E	3B	8:37
104	Anna Sheldon	QLD	41226	W21E	3A	8:37
152	Julia Davies	QLD	406209	W21E	3A	8:39
153	Felicity Brown	NSW	402185	W21E	3B	8:39
107	Natasha Key	VIC	44203	W21E	3A	8:41
108	Tracy Bluett	NSW	44159	W21E	3B	8:41
125	Jenny Casanova	SA	403504	W21E	3B	8:43
132	Clare Brownridge	VIC	204305	W21E	3A	8:43
151	Allison Jones	ACT	41249	W21E	3B	8:45
154	Jane Ewels	VIC	204344	W21E	3A	8:45
114	Mace Neve	ACT	204340	W21E	3B	8:47
115	Briohny Davey	NSW	402196	W21E	3A	8:47
105	Kathryn Ewels	VIC	204020	W21E	3B	8:49
106	Vanessa Round	SA	204166	W21E	3A	8:49
136	Ilka Barr	VIC	204088	W21E	3A	8:51
138	Shannon Jones	ACT	44279	W21E	3B	8:51
111	Jasmine Neve	VIC	204385	W21E	3A	8:53
112	Susanne Casanova	SA	403503	W21E	3B	8:53
120	Zoe Radford	VIC	204320	W21E	3B	8:55
124	Ainsley Cavanagh	QLD	258821	W21E	3A	8:55

Marissa	Lee			W17-20E	4A	8:42
	vacant			W17-20E	4B	8:42
128 Aislinn	Prendergast	VIC	204181	W17-20E	4B	8:44
131 Krystal	Neumann	QLD	251286	W17-20E	4A	8:44
141 Heather	McDonald	ACT	43170	W17-20E	4B	8:46
155 Emily	Prudhoe	NSW	335391	W17-20E	4A	8:46
123 Belinda	Lawford	ACT	409754	W17-20E	4B	8:48
133 Laurina	Neumann	QLD	258880	W17-20E	4A	8:48
157 Lauren	Gillis	SA	229968	W17-20E	4A	8:50
156 Jasmine	Sunley	VIC	302897	W17-20E	4B	8:50
118 Rachel	Efenev	QLD	256626	W17-20E	4A	8:52
122 Bridget	Anderson	QLD	354644	W17-20E	4B	8:52

* due to expected hot weather, all start times have been brought forward by 1 hour



Event 1: Spring Gully



Event 2: Mt Beckworth